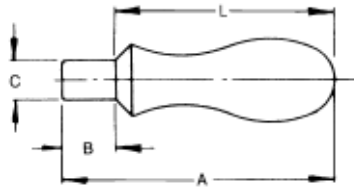


Handles

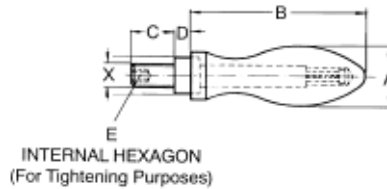
- ▶ Machine steel, high polished finish
- ▶ Solid or revolving handle
- ▶ Excellent handle for fixturing or when used with cast iron and aluminum handwheels.



Solid Part #	Revolving Part #	A	B	C	L
H-10		1-29/32	7/16	1/4	1-15/32
H-20		2-5/32	7/16	5/16	1-23/32
	H-1	2-5/8	9/16	5/16	2-1/16
H-30		2-11/16	9/16	3/8	2-1/8
	H-2	3-25/32	3/4	3/8	3-1/32
H-40		3-15/16	11/16	7/16	3-1/4
	H-3	4-1/32	3/4	7/16	3-9/32
H-50		5	15/16	1/2	4-1/16
	H-4	5-1/8	15/16	1/2	4-3/16

Metric Revolving Handles

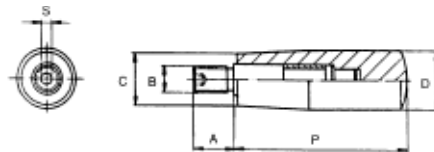
- ▶ Revolving handle
- ▶ Handle available in polished steel or black thermoplastic
- ▶ Steel screw with black oxide finish



Steel Part #	Plastic Part #	X	A	B	C	D	E
HA-6	HP-6	M6 x 1.0	16mm	50mm	11mm	5.5mm	3mm
HA-8	HP-8	M8 x 1.25	20	64	13	6	4
HA-10	HP-10	M10 x 1.5	25	80	14	8	5
HA-12	HP-12	M12 x 1.75	32	100	21	10.5	6

Handles plastic, revolving

- ▶ Thermoplastic handle
- ▶ Spindle made from steel
- ▶ Revolving handle
- ▶ Metric thread



PART #	B	P	A	C	D	S
RH-60	M6 x 1.0	1.97	.51	.71	.83	.12
RH-61	M8 x 1.25	2.56	.55	.75	.91	.16
RH-62	M10 x 1.5	3.15	.63	.87	1.02	.20